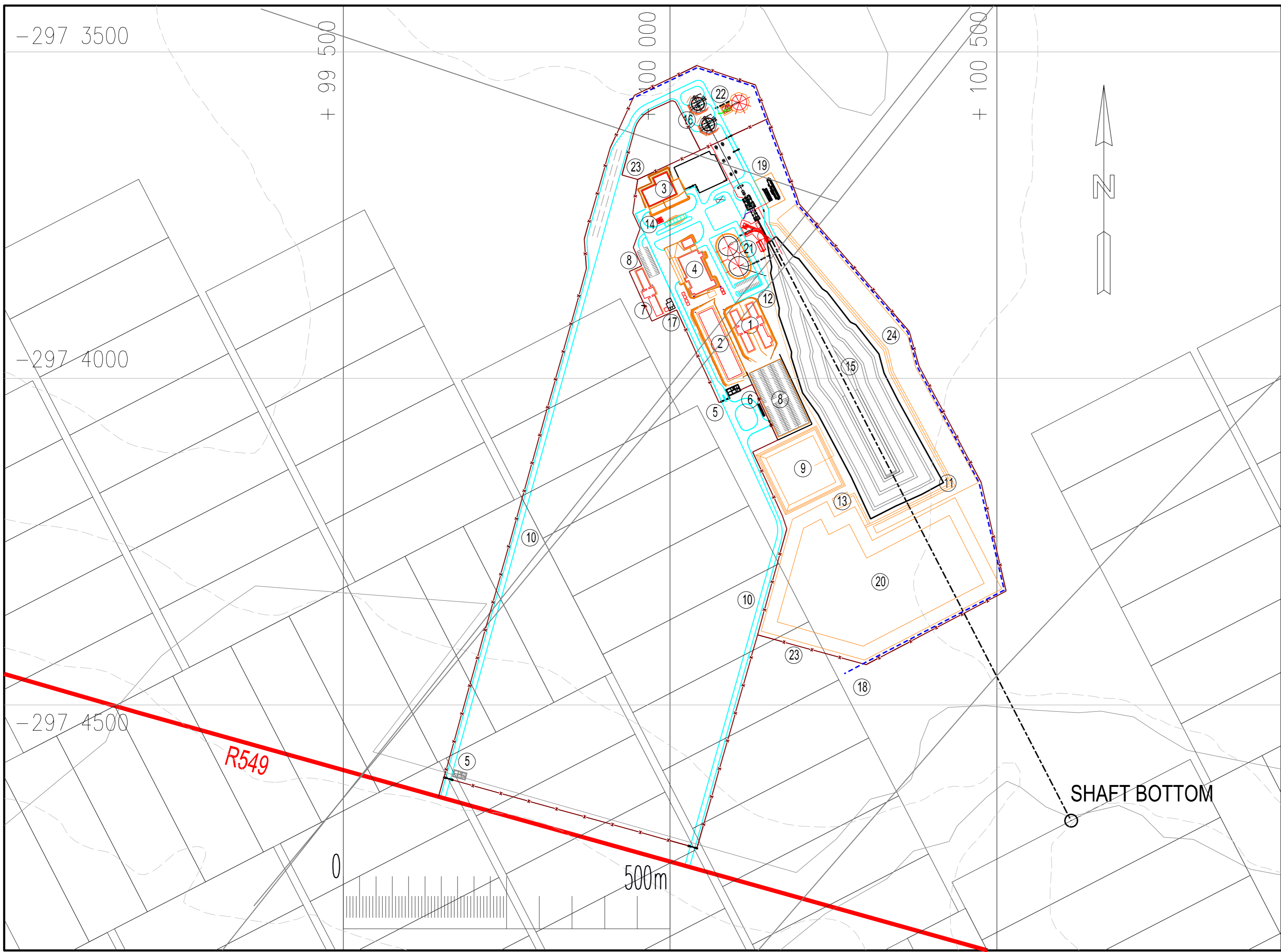
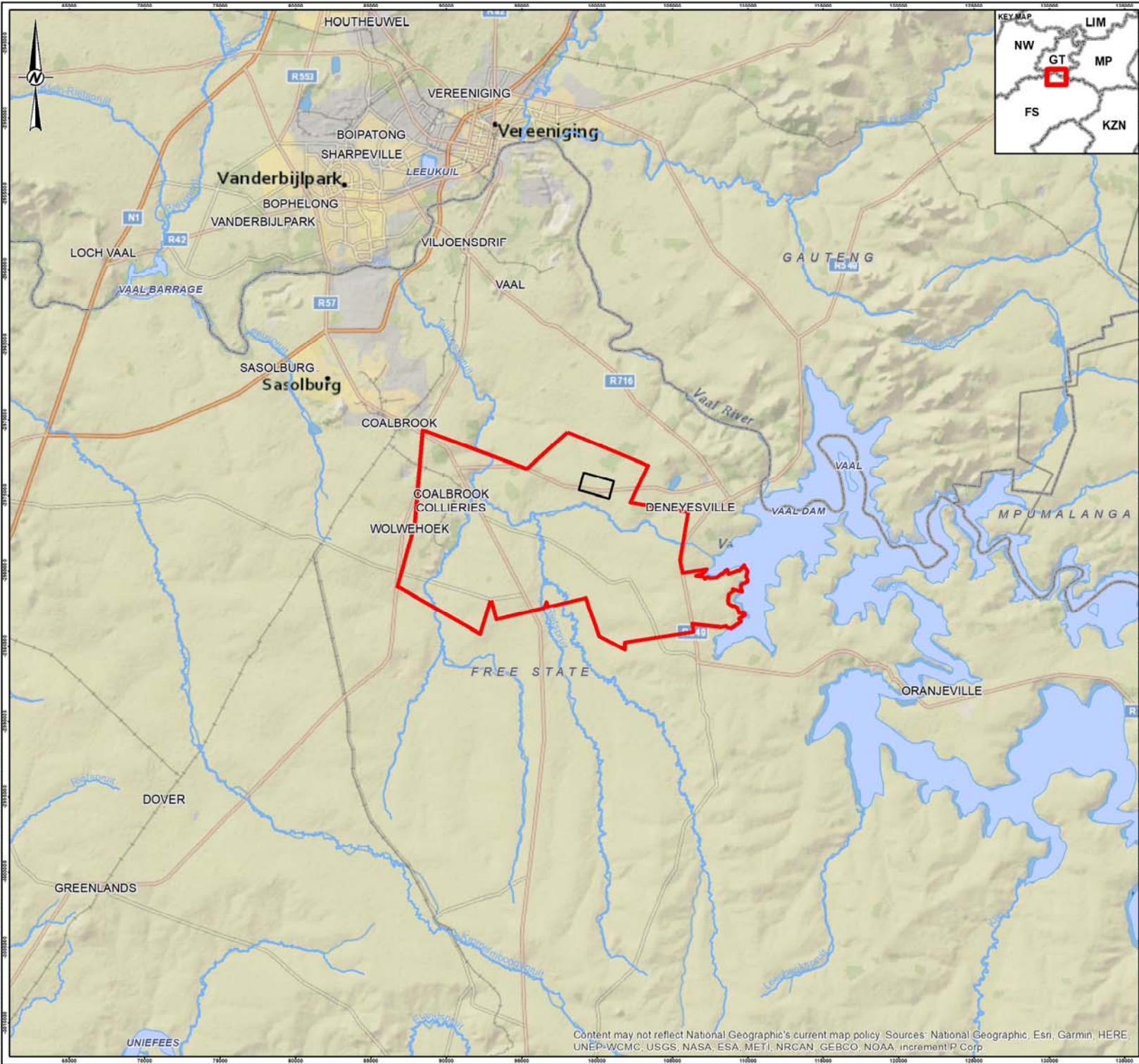


APPENDIX B
Site Plan



INFRASTRUCTURE LEGEND

- 1.MINE OFFICES
- 2.CHANGE HOUSE & LAUNDRY
- 3.STORES
- 4.WORKSHOPS
- 5.SECURITY
- 6.BUS SHELTER
- 7.SHAFT OFFICES
- 8.PARKING
- 9.POLLUTION CONTROL DAM
- 10.MAIN ACCESS ROAD (SURFACED)
- 11.MAINTENANCE ROAD (GRAVEL)
- 12.POLLUTED WATER DRAIN
- 13.SEWAGE TREATMENT PLANT
- 14.LIGHT VEHICLE REFUEL BAY
- 15.INCLINE SHAFT
- 16.SURGE SILO (3000t PROVISIONAL)
- 17.LAMP ROOM
- 18.STORMWATER CUT OFF DRAIN
- 19.SUBSTATIONS
- 20.WASTE STOCKPILE
- 21.BULK/RAW WATER STORAGE
- 22.FIRE WATER STORAGE
- 23.FENCE
- 24.TOPSOIL STOCKPILE



- LEGEND**
- Proposed Shaft Complex
 - Metsimaholo Mining Right Application Area
 - Towns - intermediate
 - Major Rivers - NFEPA



NOTE(S)

REFERENCE(S)
COORDINATE SYSTEM: WGS 1984 LO27

CLIENT
SERITI RESOURCES

PROJECT
METSIMAHOLO

TITLE
LOCALITY MAP

CONSULTANT	YYYY-MM-DD	2018-06-25
	DESIGNED	MM
	PREPARED	MM
	REVIEWED	LM
	APPROVED	AS

PROJECT NO. 18101804 CONTROL REV FIGURE

Content may not reflect National Geographic's current map policy. Sources: National Geographic, Esri, Garmin, HERE, UNEP-WCMC, USGS, NASA, ESA, METI, NRCAN, GEBCO, NOAA, increment P Corp.